



Harrison, Shelby, and Monona County Hub (HMS Hub)

May 9, 2024 Virtual Meeting

# HMS Hub Priority Information

# Introduction

In small groups:

Name and agency

Answer question – What has been the best part of your week so far?





## How we got here

- February 2023 Service Array Meeting – Harlan
- Resource Deep Dive Meetings – March 2024
- Finalize Priorities – May 2024
- June 26, 2024 – start the work

# Harrison, Monona, and Shelby County Hub Mission Statement

The mission of the HMS Hub is to create new resource paths of communication and reduce trauma for children and families of Harrison, Monona, and Shelby counties by expanding protective factors through increased service connections.



# Housing Access

---

- **Assistance in securing needed housing** – assistance in accessing publicly funded programs designed to provide suitable homes for those unable to find or pay for them, including low-rent public housing, rent subsidies, home ownership assistance and home maintenance programs for low-income families. This service includes assistance for homeless people through homeless shelters and support resources to reduce homelessness.





# Housing Access

SCOPE: assistance in securing needed housing

## Available resources:

HUD	H	M	S
Housing Homeless Provider Network	H	M	S
Churches	H	M	S
Low Income Housing	H	M	S
General Assistance	H	M	S
Veteran Affairs	H	M	S
Houseiowa.com			
Heartland Family Service **			
SWITCO	H		S
SIMPCO		M	
Connections Area Agency on Aging			
NE AIDS Project – Siouxland Community Health Center **			

## Gaps Identified:

Transportation			S
Realtors Association Business & Engagement		M	
No Local Shelters	H	M	S
FCC No Hotels for Emergency Stays		M	
Need more Low Income Housing		M	
Available Housing		M	
Quality & Affordable Housing		M	S
Bill Assistance		M	
Upkeep of Property Funds			S
Case Management for Applications			S
Deposit Assistance			S
Homeless Support Access to Human			S
Transitional Housing		M	S
Homeowner Assistance			S
No Rent Subsidies			S
Recovery Housing	H		
Housing Opportunities for Young People	H		
Kids Aging out of Foster Care	H		
Housing Opportunities for Felons	H		
Crisis Residential Housing	H		

# Housing Access Data

## Work Hours/ week to rent 2-bed home at minimum wage (2)

- H – 104.7 hours
- M – 75.9 hours
- S – 75.9 hours
- Iowa – 80.6 hours

## Home Ownership Rate (2)

- H – 75%
- M – 76%
- S – 75%
- Iowa – 71%



# Basic Needs

---

- **Employment** – assistance in securing and retaining employment. Also, services to assist develop the capabilities and skills to be employable.
- **Lack of income** – employment provides living wage, benefits, including healthcare and adequate hours each week to meet the basic needs of the family.
- **Food insecurity** – assistance in obtaining food. Education in obtaining nutritious food.







# Basic Needs

SCOPE: employment, Lack of Income, Food Insecurity

## Available resources:

Health Care Centers / Hospitals	H	M	S
Food Pantries	H	M	S
Public Health Departments	H	M	S
Schools	H	M	S
West Central Community Action	H	M	S
Law Enforcement	H	M	S
Area Education Agencies (AEA)	H	M	S
Department of Human Services	H	M	S
Workforce Development **	H	M	S
WIC	H	M	S
Share My Smile	H	M	S
Medicaid & Hawk I	H	M	S
Childcare Resource & Referral	H	M	S
General Assistance	H	M	S
Assurance Wireless	H	M	S
Vocational Rehab Services	H		S
ISU Gardening & Health Eating		M	
Food for you		M	
Siouxland Regional Transit Bus		M	

## Identified gaps:

Transportation	H	M	S
Internet Access	H	M	S
Education on Healthy Eating	H		S
Resource Awareness		M	S
Workforce Development Accessibility	H		
Employment Opportunities	H		
Food Insecurity Resources	H		
Food Pantry Accessibility	H		
Eligibility for Assistance			S
Childcare During Programming			S
Deposits for Housing			S
Case Management with Applications & Processes		M	
Family Nights		M	
Work Study Opportunities for Youth		M	
Job Training		M	

# Meeting Basic Needs Data / Employment

## Unemployment (2)

H – 3%

M – 3%

S – 4 %

Iowa – 4%

## Medicaid participants (1)

unemployed – 30.6%

pt/ temp working – 16.3%

Unemployed, not seeking work – 43.3%

Full time work – 19%

## Wage needed to meet basic needs; single parent with 1 child under 6 (4)

H - \$20.07

M - \$17.66

S - \$17.77

Iowa - \$21.16

H - \$15.48

M - \$14.81

S - \$16.74

Iowa - \$16.11

State median wage - \$19.19

State minimum wage - \$7.25



# Meeting Basic Needs Data / Lack of Income

## Poverty Rate (2)

H – 8%

M – 13%

S – 8%

Iowa – 11%

## Households Under 200% poverty (2)

H – 25%

M – 30%

S – 27%

Iowa – 28%

## In the past year unable to get any of the following when needed? (1)

Utilities – 23.7%

Transportation – 37%

Phone – 16.4%

Mental health – 18.1%

Medical Care – 16.6%

Food – 33.4%

Eye care – 21.4%

Dental care – 39.3%

Clothing – 21.2%

Child care – 10.2%



# Meeting Basic Needs Data / Food Insecurity

## Reduced and free lunch eligibility (2)

H – 35%

M – 46%

S – 37%

Iowa – 37%

## Accessing SNAP benefits (2)

H – 10%

M – 11%

S – 12%

Iowa – 10%

## Past 30 days, ever go hungry – youth (7)

	H 6th	M	S	Iowa	H 8th	M	S	Iowa	H 11th	M	S	Iowa
Yes	5%	8%	9%	8%	2%	7%	9%	5%	2%	6%	8%	5%
No	95%	92%	91%	92%	98%	93%	91%	95%	98%	94%	92%	95%



# Healthcare Access

---

- **Dental health** – provision of general dental care services to children including those who have Medicaid or are not covered by insurance
- **Mental health assessment & treatment** – an array of assessment and treatment supports for individuals. Including screenings for emotional and behavior disorders and resources for those with identified mental health and/or behavioral health concerns.
- **Physical health (including adolescent sexual health)** – primary and basic health care services designed to treat, prevent, and detect physical and mental disorders and to enhance physical and psychosocial well-being. Adolescent sexual health is a continuum of programs and resources for HIV/STD and pregnancy prevention.





# Healthcare Access

SCOPE: dental health, mental health assessment and treatment, physical health

## Available resources:

1 <sup>st</sup> Five	H	M	S
SWIAMHDS	H	M	S
I Smile	H	M	S
Public Health	H	M	S
School Nurses	H	M	S
Community Wellness Centers	H	M	S
Substance Use Treatment **	H	M	S
Iowa Department of Health & Human Services	H	M	S
West Central Community Action	H	M	S
Family Inc. Mobile Wellness Unit	H	M	S
SWITA	H		S
SWIPCO		M	
Healthcare Centers / Hospitals **	H	M	S
Mental Health Clinics **	H	M	S
AA / NA	H	M	S
Learning for Life	H	M	S
Mobile Crisis Outreach	H	M	S
Integrated Health Home	H	M	S
Boys Town	H	M	S
Ryan White NE AIDS Project **			
Lyons Club Vision Screening	H		
Broadway Dental	H		
Family Access Center **			

## Gaps Identified:

Church on the Street			S
Street Medicine			S
Support for Uninsured or with Limited Access or Funds	H		S
Medicaid Providers			S
Mental Health Beds (Youth)			S
Affordable Transportation	H	M	S
Mental Health Wait List to get Services for 0-5 Year Olds			S
Resource List for Crisis			S
Medicaid Eligibility Access	H		
Local Specialized Health Care	H		
Educate & Connect to Resources	H		
More Medicaid Acceptance	H		
More Counseling Access	H	M	
Dentist that takes Medicaid	H	M	
Engaging Newly Eligible Medicaid Care 4 Kids	H		
More Utilization of Crisis Services Offered by SWIMHDS Region		M	
Substance Use Treatment		M	
Intervention of MA / SA		M	
Drug Court		M	
Options for Behavioral Health in Jail		M	

\*\* indicates possible access barriers

# Healthcare Access Data / Dental Health

## Dentist per population (3)

H – 2,200 : 1

M – 2,860 : 1

S – 1,680 : 1

US – 1,380 : 1

36% Medicaid participants in HMS region under age 6 received dental services – state 38.4% (ranked 31<sup>st</sup> among 38 ECI areas)

Past 12 months – had a dental problem would like to see a dentist, but you did not (1) – 12%

Past 12 months – went to ER for dental problem (1) – 1.3%



# Healthcare Access Data / Mental Health

## Poor mental health days/month (5)

H – 4.5 days

M – 4.5 days

S – 4.4 days

Iowa – 4.4 days

## Stress levels (1)

very much or quite a bit – 16%

somewhat or a little bit – 41%

not at all – 44%

## Have you been told you had depression or a depressive disorder - adult? (1)

Iowa – 18% yes 82% no

SW Region – 13% yes 87% no





# Healthcare Access Data / Sexual Health

## Teen births (3)

H – 16

M -14

S – 16

Iowa – 16

US – 19

## Sexually transmitted infections (3)

H – 227.8

M -232.2

S – 218.3

Iowa – 478.5

US – 481.3

## Have you been tested for HIV – adult? (1)

Iowa – 26% yes 74% no

SW Region – 24% yes 76% no



# Healthcare Access Data / Physical Health

## Adult Smokers (3)

H -19%

M – 20%

S – 18%

Iowa – 17%

US – 16%

## Adult obesity (3)

H – 40%

M – 36%

S – 39%

Iowa – 37%

US – 32%

## Uninsured (3)

H – 6%

M – 6%

S – 6%

Iowa – 6%

US – 10%

## Health outcomes – how healthy a county is (length of life and quality of life) (3)

H - #68 of 99 counties

M - #94 of 99 counties

S - #33 of 99 counties

## Health factors – things we can modify to improve length and quality of life (3)

H – lower 25-50%

M – lowest 0-25%

S – highest 75-100%



# Prevention / Education

---

- **Substance use prevention** – primary prevention programs which give priority to target population sub-groups that are at risk of developing a pattern of substance use.
- **Suicide prevention** – a community-based approach for education and dialogue on recognizing and responding to the signs of suicide of people in your own life
- **Personal safety and development curriculum** – services provided to children to meet their educational needs
- **Enhanced daily living skills to promote better health** – community opportunities for individuals to develop healthy lifestyle through health education and/or participation in physical activity





# Prevention/Education

SCOPE: substance use prevention, suicide prevention, personal safety & development curriculum (school based), enhanced daily living skills to promote better health

Available resources:

Healthcare & Mental Health Clinics	H	M	S
SWIMHDS Region	H	M	S
Set Me Free Project	H	M	S
Project Harmony	H	M	S
Juvinal Justice	H	M	S
Public Health Departments	H	M	S
Schools	H	M	S
988 Hotline	H	M	S
1 <sup>st</sup> Five Program	H	M	S
After School Care Programs	H	M	S
DHHS	H	M	S
NAMI	H	M	S
BHIS Programs	H	M	S
Community Wellness Center	H	M	S
Family Inc	H	M	S
WIC	H	M	S
Learning for Life	H	M	S
Thriving Families Alliance	H	M	S
AEA's	H	M	S
Boys Town	H		S
Family Connections		M	S
Rosecrance Jackson		M	S
Heartland Family Service	H		
Substance Abuse Treatment **	H	M	S
Parent/Community Trainings	H	M	S
Iowa Victim Services Call Center	H	M	S
Catholic Charities **	H		S
Children's Square **			

Seasons Crisis Hotline			
Hope Squad	H		
Prevention Means Progress	H		
Handle With Care	H		
Poverty Simulator			S





# Prevention/Education

SCOPE: substance use prevention, suicide prevention, personal safety & development curriculum (school based), enhanced daily living skills to promote better health

## Identified Gaps:

Lack of Coordination / Knowledge of Service		M	
Dental Education / Navigation for Adults on Medicaid		M	
Outdoor Trail System (Free Outdoor Physical Activities)		M	
No Cost Community Exercise Classes		M	
Education for Grandparents on Utilizing Current Parenting Best Practices		M	
Special Needs Services Coordination		M	
Transportation	H		
Pediatricians	H		
988 Hotline Not Being Used	H		
Obesity	H		
Nutrition / Eating Disorders	H		
Vaccine	H		
Missing Juvenal Justice – Intervention & Prevention of Recidivism	H		
Non-Insured Substance Use Prevention & Evaluation			S
Hope Squad			S
More Mental Health Beds For All			S
Out of Home Placements for Youth with Severe Behavioral Health Needs			S
Respite Care			S
Caring Hearts & Family Resources			S
Hemp Derived THC Signage			S
Multiple Languages			S

Substance Free Events			S
Toilet Talks			S
More SA and MH Providers and Treatment Locally			S

\*\* indicates possible access barriers



# Prevention Education Data / Suicide Prevention

Youth – past 12 mo. feel so sad or helpless that you stopped doing some activities? (7)

	H 6th	M	S	Iowa	H 8th	M	S	Iowa	H 11th	M	S	Iowa
Yes	30%	35%	18%	27%	30%	34%	17%	29%	38%	39%	40%	36%
No	70%	65%	82%	73%	70%	66%	83%	71%	63%	61%	60%	64%

Youth – past 12 mo. thought about killing yourself? (7)

	H 6th	M	S	Iowa	H 8th	M	S	Iowa	H 11th	M	S	Iowa
Yes	18%	20%	18%	17%	18%	21%	4%	21%	34%	24%	27%	24%
No	82%	80%	82%	83%	82%	79%	96%	79%	66%	76%	76%	76%

# Prevention Education Data / Suicide Prevention

## Poor mental health days/month (5)

H – 4.5 days

M – 4.5 days

S – 4.4 days

Iowa – 4.4 days

## Stress levels (1)

very much or quite a bit – 16%

somewhat or a little bit – 41%

not at all – 44%

## Have you been told you had depression or a depressive disorder - adult? (1)

Iowa – 18% yes 82% no

SW Region – 13% yes 87% no

# Prevention Education Data / Substance Use Prevention

## Adult excessive drinking (3)

H – 25%

M – 25%

S – 25%

Iowa – 25%

## SU involved mortalities in 2020 (1)

H - 11

M - 12

S – suppressed between 1-5

Iowa – 661 (44% increase)

## Received SU treatment in 2023 (5)

H - 38

M -29

S -49

Iowa -17,477

## ER & hospital for SU reasons (1)

H – 165 ER

M – 109 ER & 8 hospital = 117

S – 168 ER & 11 hospital = 179





# Prevention Education Data / Substance Use Prevention

## Alcohol use age 12-17 (9)

Region – 10%

Iowa – 10%

US – 9%

## Marijuana use age 12-17 (9)

Region – 14%

Iowa – 12%

US – 16%

## Binge Alcohol use age 18-25 (9)

Region – 78%

Iowa – 42%

US – 35%

## Marijuana use age 18-25 (9)

Region - 32%

Iowa – 30%

US – 35%



# Childcare & Early Childhood Education

---

- **Early Childhood Education** – programs to provide preschool children of disadvantaged families compensatory education to offset effects of social deprivation
- **Early Intervention** – home visitation programs for early intervention to mobilize resources in a child and family centered, strength-based process with planning.
- **Educational services for parents/caregivers** – educational classes to provide support and resources to help parents meet their children’s educational and emotional needs.

## Childcare & Early Childhood Education





# Childcare and Early Childhood Education

SCOPE: Early Childhood Education, Early Intervention, Educational services for parents / caregivers

## Available resources:

Head Start	H	M	S
Childcare Resource & Referral	H	M	S
CFRN Parent Cafes	H	M	S
Childcare State Assistance	H	M	S
Libraries	H	M	S
WIC	H	M	S
Parent Partners	H	M	S
Preschools / Schools	H	M	S
Learning for Life	H	M	S
AEA's	H	M	S
1 <sup>st</sup> Five Program	H	M	S
Behavioral Health Providers & Clinics	H	M	S
Nurtured Heart Approach	H	M	S
BIHS	H	M	S

## Identified gaps:

Transportation	H	M	S
Childcare Off Hours & Side Kicks	H	M	S
Childcare Facilities that Accept State Assistance	H	M	
In Person Parenting Classes	H	M	S
Childcare Workforce	H		
0-3 Age Registered Childcare	H		
More Space Head Start Programs			S
Affordable Daycare			S
Satellite Program for Most Complex Kids (Autism)			S
More Schools Support in School for Behavioral Health Kiddos vs Transporting to CB or Omaha			S
Gap Between 3-Year-Old Preschool and 4-5 Year Old		M	
Childcare Facilities		M	

# Childcare & Early Childhood Education

	Harrison	Shelby	Monona
Children 0-6	980	540	740
Total spots	493	366	432
Family w all parents working w children under 6	88%	67%	72%
Median income	\$81,698	\$71,688	\$87,147
Income on childcare	11%	10%	9%

## **Annual cost of infant care (4)**

H - \$8,466

M - \$7,488

S - \$8,125

Iowa - \$11,129



# Childcare & Early Childhood Education

## 3/4 y.o. in preschool (4)

H – 59%

M – 68%

S – 38%

Iowa – 46%

## School readiness – reach kindergarten readiness benchmark (6)

2021-2022 – 68%

2022-2023 – 72%



### Childcare & Early Childhood Education



### Housing Access



### Healthcare Access



### Basic Needs



### Prevention / Education





**Questions**

# We need your help

What will the HMS Hub priorities be?

Vote for top 2 choices –

Save the Date – June 26<sup>th</sup> 9am –  
2pm Rand Community Center –  
Missouri Valley





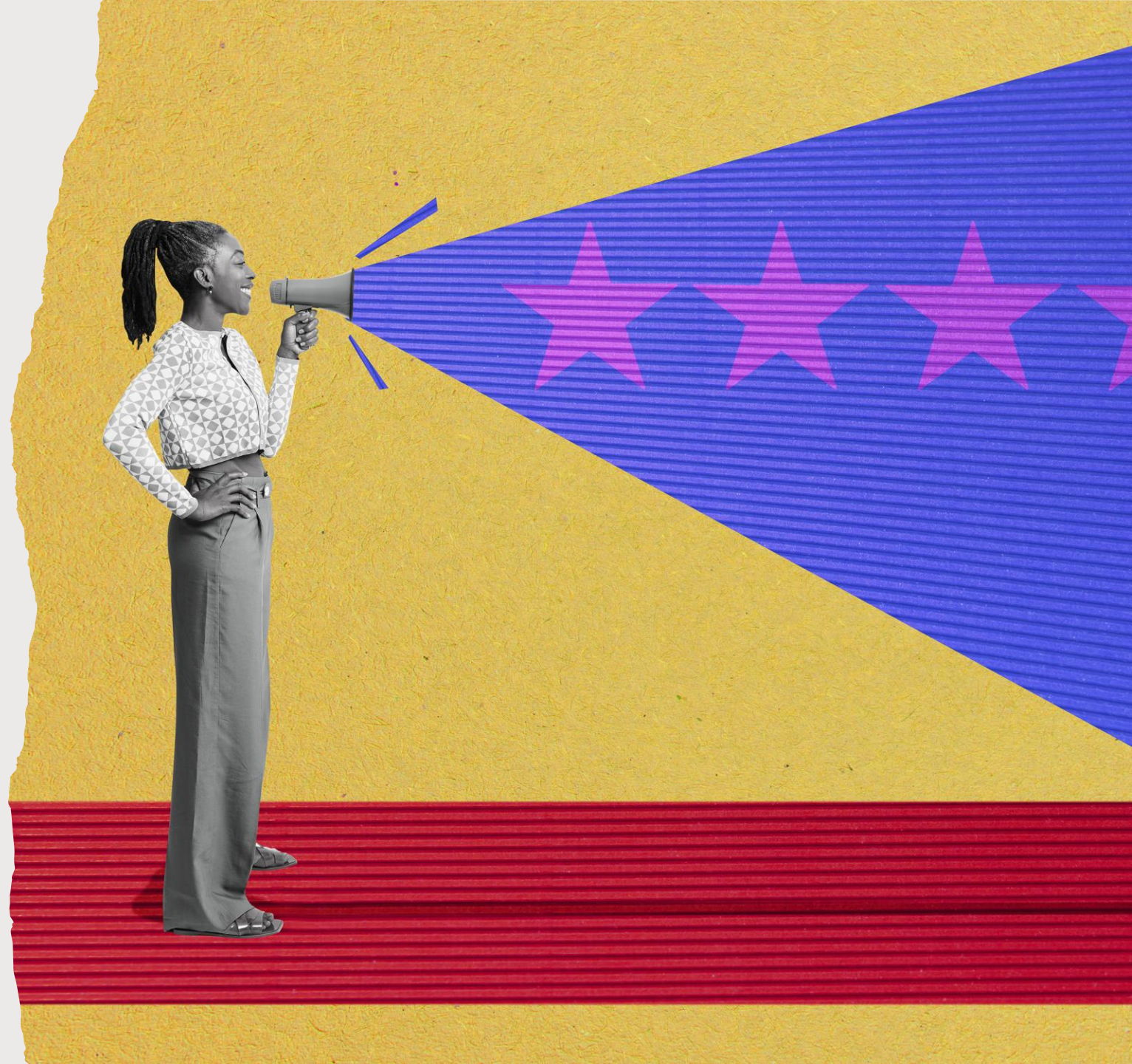
# Data Resources

---

1. Iowa Department of Health and Human Services Agency Dashboard Initiative
  - [Agency Dashboards | Health & Human Services \(iowa.gov\)](#)
2. Casey Family Programs Community Opportunity Map
  - [The Community Opportunity Map - Casey Family Programs](#)
3. Iowa County Health Rankings & Roadmaps
  - [Iowa | County Health Rankings & Roadmaps](#)
4. Common Good Iowa Data Snapshot
  - [Data | Common Good Iowa](#)
5. Iowa Health and Human Services System Snapshot
  - [HHS System County Snapshots | Health & Human Services \(iowa.gov\)](#)
6. Kindergarten Assessment by ECI Area
7. Iowa Youth Survey 2021
  - [Report Template \(iowa.gov\)](#)
8. Behavioral Risk Factor Surveillance System (BRFSS)
  - [Behavioral Risk Factor Surveillance System \(BRFSS\) | Health & Human Services \(iowa.gov\)](#)
9. Behavioral Health Barometer Iowa, V 6  
[Iowa-BH-Barometer\\_Volume6.pdf](#)



# Evaluation



# Thank you

Tiffani Pinkerton

Collaborative Director

6 West 7<sup>th</sup> St

Woodbine, IA 51579

[tpinkerton@thrivingfamiliesalliance.org](mailto:tpinkerton@thrivingfamiliesalliance.org)

712-482-1280

